

Model Information



■ Main Features

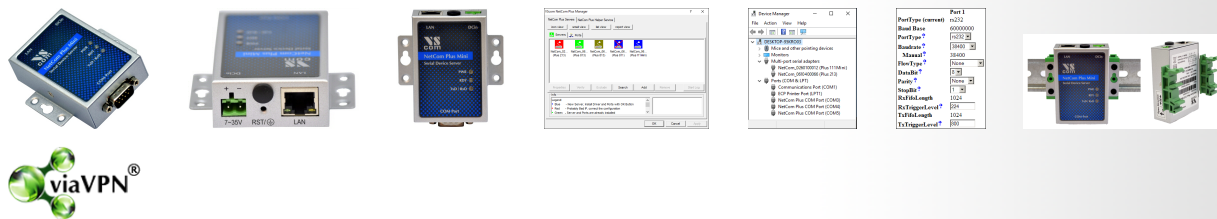
- Ethernet to serial 1 port RS232
- Virtual Com Port driver for Windows
- Secure Server with latest SSL/AES-256 encryption
- Operation in Driver Mode, TCP/IP and many other
- Quick Configuration over Driver and Browser
- ESD protection on serial port, Ethernet, DC power
- Wall mountable, DIN Rail as an option
- Only 1W power consumption
- Ultra small metal case

[Contact Online...](#)

NetCom Plus 111 Mini (NetCom 111, NetCom Mini)

Quick Link: | [Main Features](#) | [More Pictures](#) | [Overview](#) | [Ethernet Interface](#) | [Serial Interface](#) | [Software](#) | [Installation & Configuration](#) | [Security](#) | [viaVPN Remote Access \(option\)](#) | [Power Requirements](#) | [Housing and Mounting](#) | [Environmental Data](#) | [Standards](#) | [MTBF \(Mean Time Between Failures\)](#) | [Warranty](#) | [Ordering Information](#) | [Options](#) | [Packaging](#) |

■ More Pictures



Click on the thumbnails for the large picture ...

[>Back to top](#)

■ Overview

The Ethernet to Serial Gateways NetCom Plus connect RS232 or RS485 devices to a network running TCP/IP. The NetCom Plus Mini Serial Device Servers are rugged industrial devices with ultra small metal case and DIN-Rail or wall mounting, further supported by ESD protection on serial ports and power input. The very low power demand is an extra advantage. The NetCom Plus Mini 111 provides one RS232 port.

Windows Driver installs Com Ports

The driver for Windows operating system installs Virtual Com Ports. These operate in the same way as built-in ports, but via Ethernet. Easy-to-use Installation and Management software guides users through the configuration.

High Speed Serial Ports, Low Power

The serial ports allow data rates of up to 3.0Mbps in RS422/485 or 1000kbps in RS232 modes. The ports also allow every non-standard bitrate up to 960kbps, and many above that. See [FAQ](#). The gateways demand less than 1W of power. The flexible input allows for various sources of customers choice.

Easy Configuration, versatile Operation Modes

NetCom+ are configured over Driver Panels and WEB Browser. This is also possible via serial Port, Telnet or SNMP. NetCom+ provide Driver Mode, TCP/IP or UDP connection, and many operation

modes beyond those.

Secure Remote Access for Monitoring

For NetCom Plus series there is a software option using the viaVPN Cloud system (www.viaVPN.com) to be remotely accessed and monitored over Internet. viaVPN provides secure and strongly encrypted access, without any reconfiguration of existing firewalls. The access to the firmware via Ethernet or WLAN is extended by viaVPN over Internet, protected by a VPN tunnel. If the Com port is not occupied by local access, also remote operation over Internet is possible.

■ Ethernet Interface

Speed/Type	100Mbps/10Mbps Auto-detecting
Connector	RJ45 (8P8C) 8 pin
LEDs	Power, Ready, Ethernet Link / Speed

[>Back to top](#)

■ Serial Interface

No. of Ports/Type	1 × RS232
Connector	DB-9 male
Protection	16kV ESD surge protection
Signals	TxD,RxD, RTS,CTS, DTR,DSR, DCD, RI, GND
Data bits	7, 8
Stop bits	1, 2
Parity	None, Even, Odd, Mark, Space
Flow Control	RTS/CTS, XON/XOFF
Baudrate	200 bps to 460.8/500 kbps Supports non-standard baudrates
LEDs	TxD/RxD for each port (bi-color)

[>Back to top](#)

■ Software

Network Protocols	TCP, UDP, Telnet, PPP, DHCP, ICMP, UPnP, HTTP, LPD, SNMP V1/2c/3, DNS, openVPN
Virtual-COM Mode	Driver creates virtual COM ports via NetCom protocol © for Windows XP/7/8/10, Win-Server 2003 to 2008 R2 (x86/x64)
Socket Modes	TCP RAW Server, TCP RAW Client, UDP Mode, Print Server Automatic switching between Virtual-COM and TCP-RAW Server modes.
Tunnel Modes	Null Modem Tunnel and IP Modem
Fixed TTY Drivers	socat Tool, Linux OS

[>Back to top](#)

■ Installation & Configuration

Installation	NetCom Plus Manager automatically finds NetCom Plus devices in the local network.
UPnP	With Network discovery enabled NetCom Plus servers announce their presence via UPnP making their IP visible.
Configuration	via WEB-Browser, Driver Panels, NetCom Manager, serial console, Telnet console or SNMP
Firewall	Virtual-COM mode works through firewalls
Firmware Update	via WEB Browser

[>Back to top](#)

■ Security

Password Protection	for all available configuration options e.g. via WEB-Browser
Secure Server	create openVPN™ tunnels, for encrypted transmission of all serial and configuration data using high security SSL/TLS standards.

[>Back to top](#)

■ viaVPN Remote Access (option)

Connect via Internet

[viaVPN](#) technology provides easy and secure access to remotely installed NetCom Plus servers for their configuration or for connecting their virtual COM ports through Internet. With the viaVPN option the NetCom Plus servers are no more limited to only work inside of a local network.

Security

All communications use openVPN-tunnels encrypted by SSL/TLS and AES-256 standards.

Firewall friendly

No Reconfiguration of firewalls is required for viaVPN remote access.

[>Back to top](#)

■ Power Requirements

Input Voltage

7 - 35V DC

Power Consumption

0.15mA @ 12V, 1.8W max

Connector

2-pin Terminal Block

[>Back to top](#)

■ Housing and Mounting

Case

0.8mm sheet metal

Weight

w/o box 0.10kg; w/h box 0.19g

Dimensions

50×72×22 mm³ (W×L×H) Case
72×72×22 mm³ (W×L×H) with mounting wings

Packaged

85×122×55 mm³

Mounting

- DIN-Rail (optional)
- Wall mount

[>Back to top](#)

■ Environmental Data

Operating Temp

−20°C - 65°C

Storage Temp

−20°C - 85°C

Ambient Humidity

5-95% non condensing

[>Back to top](#)

■ Standards

Declarations

CE, FCC

EMI

- EN 55022 Class B
- EN 61000-3-2: Limits of harmonic current emissions
- EN 61000-3-3: Limitation of voltage changes
- 47 CFR FCC Part 15 Subpart B

EMS (EN 55024)

- EN 61000-4-3: Radiated RFI
- EN 61000-4-4: Electrical Fast Transient
- EN 61000-4-5: Surge
- EN 61000-4-6: Induced RFI
- EN 61000-4-8: Power Frequency Magnetic Field
- EN 61000-4-11: Power supply dips

ESD

EN 61000-4-2 4kV contact 8kV air for

- Serial Port
- Ethernet
- DC Power connector

[>Back to top](#)

■ MTBF (Mean Time Between Failures)

MTBF

available soon

Standard

Telcordia (Bellcore) Standard; RelCalc. 5.0 BELL-7

[>Back to top](#)

■ Warranty

Warranty Period

2 years

[>Back to top](#)

■ Ordering Information

6643	NetCom Plus 111 Mini (1x RS232)
-------------	---------------------------------

[>Back to top](#)

■ Options

6031	Power adapter 110-230V AC to 12V @1A, DC, EU plug
-------------	---

6034	Power adapter 110-230V AC to 12V @1A, DC, US plug
-------------	---

6679	Activate option viaVPN for secure remote access over Internet
-------------	---

662	DK 35A Plastic DIN-Rail mounting kit
---------------------	--------------------------------------

6061	DB9F-to-RJ45 for changing from DB9 to CAT5 wiring (Optimised for RS422/485 operating modes)
----------------------	--

6062	RJ45-to-DB9M for changing back from CAT5 to DB9 wiring (Required to match the DB9 pinout at NetCom Plus)
----------------------	---

661	Serial Null-Modem adapter 9PF-9PF, change male to female
---------------------	--

[>Back to top](#)

■ Packaging

Packing list	<ul style="list-style-type: none">• NetCom Plus Serial Device Server• Terminal block for Power Supply
---------------------	--

[>Back to top](#)

* Specifications are subject to change without notice.

* All trademarks and brands are property of their rightful owners.

NetCom Plus 111 Mini

[>Back](#)

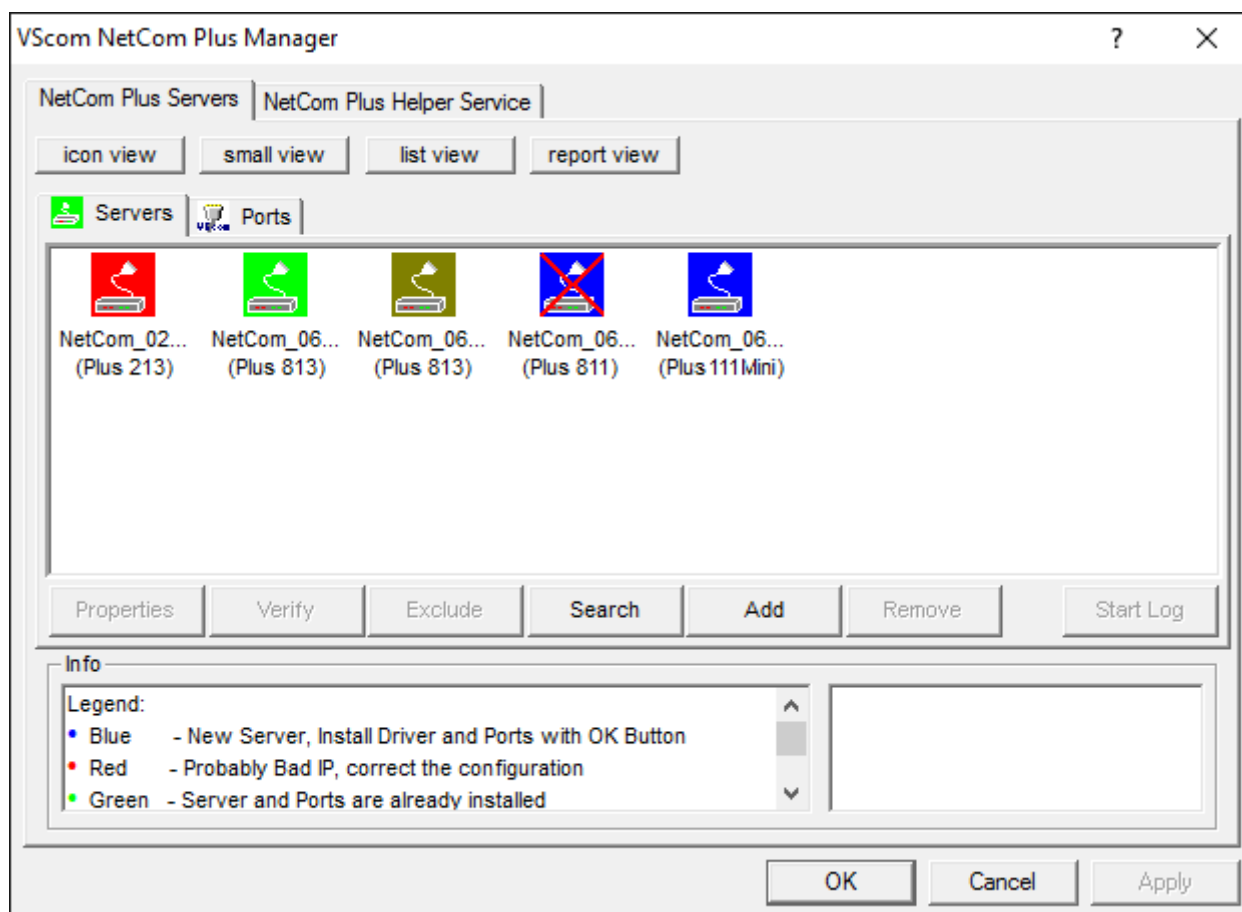






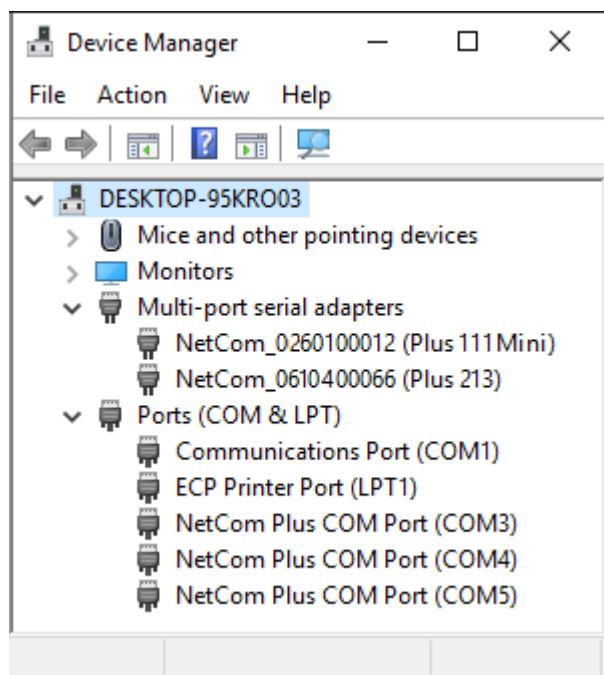
NetCom Plus Manager

[>Back](#)



NetCom Plus Mini in Device Manager

[>Back](#)



Serial Port in Web Interface

[>Back](#)

Port 1	
PortType (current)	rs232
Baud Base	60000000
PortType ?	<input type="text" value="rs232"/>
Baudrate ?	<input type="text" value="38400"/>
Manual ?	38400
FlowType ?	<input type="text" value="None"/>
DataBit ?	<input type="text" value="8"/>
Parity ?	<input type="text" value="None"/>
StopBit ?	<input type="text" value="1"/>
RxFifoLength	1024
RxTriggerLevel ?	<input type="text" value="224"/>
TxFifoLength	1024
TxTriggerLevel ?	<input type="text" value="800"/>

DIN-Rail Kit

[>Back](#)



Remote Access option

[>Back](#)



(2018 Jan 17)